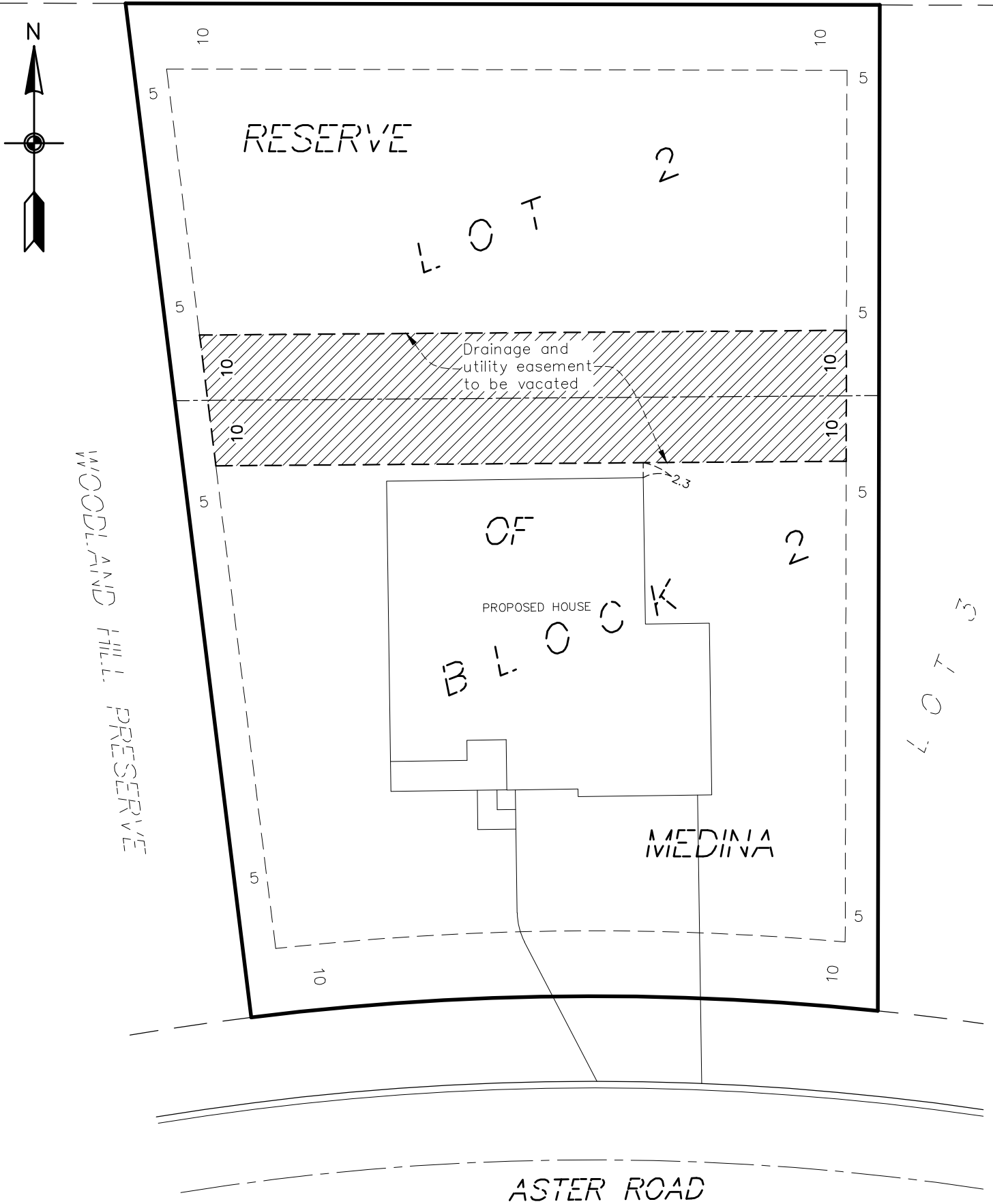


# Drainage and Utility Easement Vacation Sketch



## DRAINAGE AND UTILITY EASEMENT VACATION DESCRIPTION:

All of the drainage and utility easements as created and dedicated over, under and across that part of Lot 2, Block 2, RESERVE OF MEDINA, according to the recorded plat thereof, Hennepin County, Minnesota, EXCEPT the East 5.00 feet, the West 5.00 feet, the South 10.00 feet and the North 10.00 feet of said Lot 2 thereof.

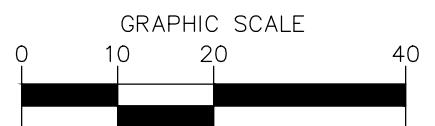
Said Easement contains 1,951 sq. ft.



**Carlson  
McCain**  
ENVIRONMENTAL • ENGINEERING • SURVEYING  
3890 Pheasant Ridge Drive NE,  
Suite 100, Blaine, MN 55449  
Phone: 763-489-7900 Fax: 763-489-7959



Drainage and Utility  
Easement Vacation Area



(IN FEET)  
(8.5x14 sheet)