



Inside this issue:

- City Amends Staging & Growth Plan..... **Pg. 1**
- Land Use Applications Under Review..... **Pg. 2**
- City Business Profile: Kalla Lily Salon & Spa.. **Pg. 2**
- Open to Business Program **Pg. 2**
- Uptown Hamel Skating/Sledding Social..... **Pg. 3**
- Winter Salt Use **Pg. 3**
- Medicine Disposal **Pg. 3**
- CenturyLink High-Speed Internet..... **Pg. 3**
- 2015 Budget Summary Data **Pg. 4**
- Police Department Phone Numbers..... **Pg. 5**
- Phone Scammers Impersonating Law Enforcement and IRS..... **Pg. 5**
- Seasonal Spring Weight Limits **Pg. 5**
- New Requirements in the Graduated Driver Licensing Law **Pg. 5**
- City Calendar..... **Back**
- Council Saturday Office Hours Cancelled **Back**
- Location of Garbage & Recycling Containers. **Back**

Recycle symbol: Paper contains 38% post-consumer recycled content.



The Medina Message

A bi-monthly publication from the City of Medina

City Council Amends Staging and Growth Plan

On January 20, 2015, the City Council approved an amendment to the City's Staging and Growth Plan within the Comprehensive Plan. The amendment delays the timeframes in which certain residential and mixed use property may be developed with City sewer and water. For more information on the amendment, please visit: <http://medinamn.us/staging/>.

The amendment was completed following a study which included substantial public input related to the recent pace of development and concerns related to the ability of regional infrastructure to support the development. The City has experienced a great deal of single-family development activity over the past four years (over 550 lots created and 300 constructed). However, population/household forecasts which the City is required to follow have been reduced by the Metropolitan Council.

The amendment can not be placed into effect until approved by the Metropolitan Council and formally adopted by the City Council, which likely will not occur until May.

CITY HALL

2052 County Road 24
Medina, MN 55340
p: 763-473-4643
f: 763-473-9359
e: city@ci.medina.mn.us

City Hall Office Hours
Mon-Fri 8 a.m. - 4:30 p.m.

PUBLIC SAFETY

600 Clydesdale Trail
Medina, MN 55340
p: 763-473-9209
f: 763-473-8858
e: police@ci.medina.mn.us

Police Department Office Hours
Mon-Fri 8:30 a.m. - 5 p.m.

Mayor

Bob Mitchell 763-473-1042

City Council

Jeff Pederson 612-916-6448
John Anderson 612-618-5702
Kathleen Martin 612-344-1111
Lorie Cousineau 612-251-3244

City Council Meetings

First & third Tuesday of each month at 7:00 p.m.

Planning Commission Meetings

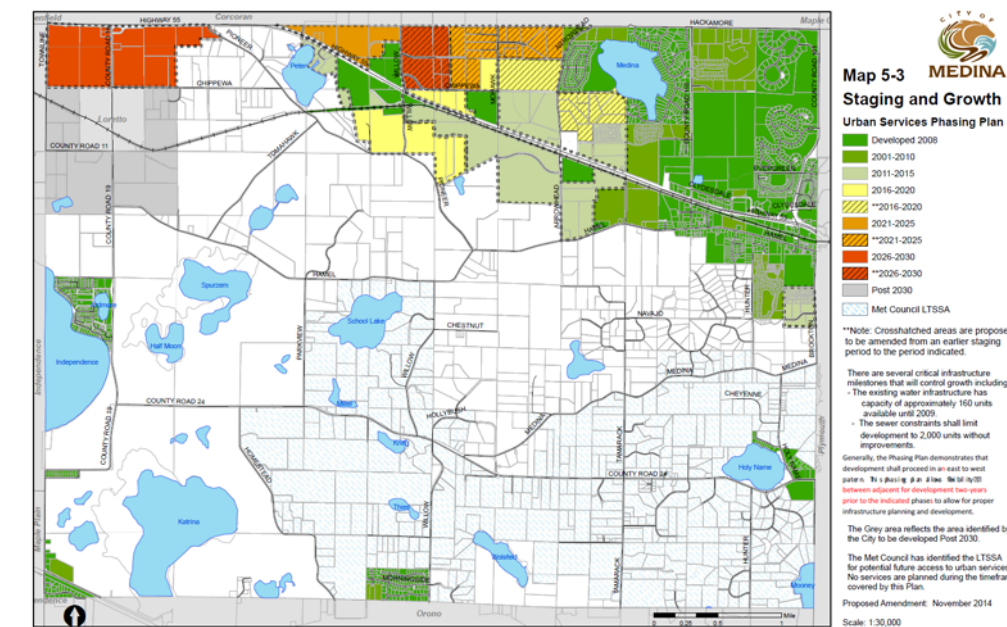
Second Tuesday of each month at 7:00 p.m.

Park Commission Meetings

Third Wednesday of each month at 7:00 p.m.

Newsletter Editor

Jodi Gallup
Assistant to City Administrator



The City will begin a complete review of the Comprehensive Plan near the end of 2015 or early 2016. If you are interested in long-term planning and development in the City, you are encouraged to be part of the process. Look for future information in the City newsletter, or contact the Planning Department at 763-473-4643 ext. 1 for more information.

City Calendar

February

- 3rd Tues—City Council 7:00 pm
- 10th Tues—Planning Commission 7:00 pm
- 16th Mon—City Offices Closed (Holiday)
- 17th Tues—City Council Work Session 6:00 pm
- 17th Tues—City Council 7:00 pm
- 18th Wed—Park Commission 7:00 pm

March

- 3rd Tues—City Council 7:00 pm
- 10th Tues—Planning Commission 7:00 pm
- 17th Tues—City Council Work Session 6:00 pm
- 17th Tues—City Council 7:00 pm
- 18th Wed—Park Commission 7:00 pm

All meetings at City Hall unless otherwise noted.
Meeting agendas on website when available.

City Council Saturday Office Hours Cancelled

Since 2007, selective Council members and the Mayor have been hosting Saturday office hours. The office hours were meant to be an informal setting to allow residents the opportunity to bring their thoughts and concerns to elected officials for a better Medina. Over the years, the city has seen little interest from residents to attend these scheduled office hours.

Due to lack of interest, the city will be canceling all future Saturday office hours, but encourages residents to contact the city at any time to make an appointment with an elected official to address their concerns.

Appointments can be scheduled by calling Assistant to City Administrator Jodi Gallup at 763-473-8850 or contact your elected official directly. Their contact information can be found on the front page of this newsletter.

Location of Garbage & Recycling Containers

The City's Solid Waste Management Ordinance requires that all garbage and recycling containers be at the rear of your property, behind a building, or in an enclosed area.

Please visit the City of Medina's website at: <http://medinamn.us/wp-content/uploads/2010/08/503.pdf> to view the entire ordinance. If you have any questions, call the City's recycling coordinator Jodi Gallup at 763-473-8850 or email jodi.gallup@ci.medina.mn.us.

Planning & Business

Land Use Applications Under Review

The following land use and development projects are currently under review by the City. For more information on one of the projects, or for an update on the review schedule, please visit <http://medinamn.us/citygov/departments/planning-zoning/> or contact the Planning Department at (763) 473-4643, ext. 1.

Property Resources Development Corporation (PRDC) – Conservation Design Subdivision PUD Concept Plan – East of Homestead Tr., West of Deerhill Rd.

PRDC has requested review of a PUD Concept Plan for the conservation design subdivision of 42 single-family lots on 170 acres. The applicant proposes to permanently preserve 40.7 buildable acres (90 acres total) of the site, which would be restored to a natural state. A Public Hearing is tentatively scheduled for the February 10 Planning Commission meeting.

Wealshire, LLC – Rezoning, Site Plan Review – NW corner of Mohawk and Chippewa

The applicant has requested to rezone 22 acres at the northwest corner of Mohawk Drive and Chippewa Road to Business Park and has also requested a Site Plan Review for construction of a 115,000 square foot building for Alzheimer’s/Dementia care. The applicant has also requested an interim use permit to allow continued agricultural use of the southern 11 acres that they do not propose to construct upon. A Public Hearing is tentatively scheduled for the February 10 Planning Commission meeting.

Solar Equipment – Ordinance Amendment

The City is currently reviewing its regulations related to solar equipment. Current regulations permit solar equipment as an accessory use in most districts, but only if attached to a building. The proposed ordinance amendment would permit ground mounted panels in certain districts and with certain restrictions. The Planning Commission discussed at the January meeting and was supportive of allowing ground mounted panels in the Business and Business Park district, but with various limitations (including a maximum of 20% of a site). The Planning Commission will continue the Hearing on the ordinance at the February 10 meeting.

Free One-on-One Technical Assistance for Small Business Owners and Entrepreneurs

Are you thinking about starting your own business or are you currently operating a small business and interested in FREE technical assistance?

Medina has partnered with the Metropolitan Consortium of Community Developers (MCCD) to offer the “Open to Business” program. This program provides FREE one-on-one assistance from MCCD’s expert staff, customized to meet the specific needs of each entrepreneur. This can include creating a business plan, suggestions on financial management and bookkeeping practices, assisting with marketing, and referrals for financing. MCCD also administers a small business loan fund which provides capital to expand local businesses.

For more information or to schedule a session, please contact Rob Smolund from MCCD at rsmolund@mccdmn.org or (612) 789-7337 ext. 260. More information is available on the City’s website: <http://medinamn.us/opentobusiness>.

City Business Profile: Kalla Lily Salon and Spa

Owners Marilou Ebert and Melissa Ebert, a mother/daughter team, purchased Kalla Lily Salon and Spa in 2006, with the goal of providing the ultimate experience of relaxation and pampering through salon and spa services. Their services include hair, face, massage and nail treatments performed by professionally trained staff that truly have passion for what they do.



“My favorite part of this business is being able to pamper people,” says owner Melissa, “It’s rewarding to be able to improve someone’s day with the services we provide.”

In addition to their relaxing and clarifying facial treatments, Kalla Lily is excited to announce their newest service, Laser treatments including the Forever Young and Forever Bare Broad Band Light Treatments. This cutting edge technology provides immediate results for multiple conditions including pigmented lesions such as freckles and age spots, red blemishes, spider veins, hair removal, skin texture and acne. Now with BBL™ certified staff and a Medical Director on staff, Kalla Lily’s level of health spa services has taken a big step!

Kalla Lily is ready to improve your mind, body and soul. Visit them online at <http://www.kallalily.com> to learn more about their services or to reserve an appointment. Conveniently located in front of Target and next to Caribou at 325 Clydesdale Trail, Medina.



Public Safety

Police Department Phone Numbers For Non-Emergency Assistance

If you have public safety questions or need an officer for a non-emergency call, you can reach the Medina Police Department at (763)-473-9209. If our office is closed, and you need assistance, you can call the Hennepin County Communication Center at their new number (952)-258-5321.

Seasonal Spring Weight Limits

The Medina Police want to remind everyone that spring weight restrictions will go into effect in early March. If you are planning a construction project, please ensure that you have your materials delivered prior to the weight restrictions.

The reason for the restrictions is to protect our roads and keep the cost of road repair down for all taxpayers. We ask all of our residents and business owners to keep an eye out for large trucks using the roads during the restriction period. If you see them using a restricted road, please call 9-1-1 and report it. Help protect your roads! For questions, you can call the Medina Police Department at 763-473-9209.

Phone Scammers Impersonating Law Enforcement and IRS

The Hennepin County Sheriff’s Office and the Medina Police Department have recently received several reports of callers posing as an employee from the County Attorney’s Office or the IRS in an attempt to fraudulently obtain money from victims.

The caller identifies themselves as an employee from the County Attorney’s Office and tells the victim they will be arrested for failing to appear for court or jury duty unless they pay money to cancel the warrant. The caller typically demands immediate payment through a pre-paid debit card, such as Green Dot. These calls can come in different formats. Previously, the caller identified themselves as a law enforcement official claiming the victim had overdue court fees or other legal fees. In the IRS scenario, the caller may demand you pay back taxes or they will send a sheriff to your house.

These calls may show as originating from law enforcement phone numbers or a phone number with a local area code, a practice commonly known as “spoofing”, to hide the origin of the call. The calls may actually be coming from out of state or even from outside the country.

If you receive any phone calls similar to this scenario, please contact the Medina Police Department at (763) 473-9209 and DO NOT turn over any money to them. Keep in mind that none of these agencies would conduct business in this manner.

New Requirements in the Graduated Driver Licensing Law

Starting January 1, 2015, there are new requirements to get a provisional license if the teen is under 18. Teens must provide a supervised driving log when taking their driving test that’s signed by a parent. The log must verify they drove under the supervision of an adult licensed driver for a minimum of 50 hours, of which 15 hours were at night.

The practice requirement drops to 40 hours, of which 15 hours were at night, if parents attend a parent awareness class and submit their certificate of completion for the parent class at their teens’ road test. We encourage parents to practice with their kids well beyond the new minimum requirements of the law to ensure they’re prepared to drive in the many driving and weather conditions they will eventually experience on their own.

Teen Drivers Are at Risk

A teen driver is more likely to be involved in a traffic crash than an adult driver. The greatest crash risk occurs during the first months of licensure. The key to reducing teen crash risks is for parents to establish and enforce family rules that minimize exposure to high risk situations, especially during the first year of licensure. Distracted driving is a serious safety issue for all drivers, but especially for teen drivers who are inexperienced behind the wheel. Teens are more likely to engage in distracted driving or risky behaviors such as using their mobile devices, carrying other teen passengers, eating or searching radio stations.

How Parents can help during the Pre-License Learning Stage

Don’t rush the training process. Just because a teen has a license, it doesn’t mean they’re ready for every driving situation or condition. Nothing can replace the many hours of supervised driving experience they need while learning how to handle most of the challenges they will eventually encounter independently. Understand Minnesota’s graduated driver licensing laws, teen driving risks, driving responsibilities and liabilities, and discuss them with your teen. Using these laws as a minimum standard, establish your own family rules for when, where, how, and with whom your teen may drive by creating a Parent-Teen Driving Contract. Follow through with consequences when problems arise.

2015 Budget Summary Data

The purpose of this report is to provide a summary of 2015 budget information for the City of Medina residents and property owners. The complete budget may be examined at Medina City Hall, 2052 County Road 24 or on the City's website at www.medinamn.us.

The 2015 City of Medina's tax capacity rate will be decreasing from 25.5% in 2014 to an estimated 23.6% in 2015 due to a 5.0% increase in the City's overall market value from 2014 to 2015. Medina's tax capacity rate decrease is contrary to the December 7, 2014 Star Tribune article, "Taxes Set to Spike in much of Metro". The final General Fund Budget for 2015 was approved on December 2, 2014 in the amount of \$4,119,507 an increase of \$156,332 or 3.9% from the 2014 General Fund Budget. The General Fund total property tax levy for 2015 was authorized for \$2,892,139, an increase of 3.0% or \$84,237 from the 2014 General Fund levy. The overall 2015 property tax levy was approved for \$3,501,811 an increase of 2.2% or \$73,731 over the total 2014 levy. The overall levy increased due to operational and maintenance expenses for the new Public Works and Police Building, increased fire services, and overall increases for health, property, and liability insurances.

Governmental Funds 2014-2015 Adopted Budgets			Enterprise Funds 2014-2015 Adopted Budgets						
	2014 Budget	2015 Budget	Water Fund		Sewer Fund		Storm Water Fund		
			2014 Budget	2015 Budget	2014 Budget	2015 Budget	2014 Budget	2015 Budget	
Revenues			Operating (OP) Revenues						
Property Tax Levy	\$ 3,428,080	\$ 3,501,811	Charges for Services	\$ 792,250	\$ 822,187	\$ 537,340	\$ 553,346	\$ 188,930	\$ 194,523
Other Taxes	\$ 20,000	\$ 80,000	Total OP Revenues	\$ 792,250	\$ 822,187	\$ 537,340	\$ 553,346	\$ 188,930	\$ 194,523
Tax Increments	\$ 382,637	\$ 395,877	Operating Expenses						
Special Assessments	\$ 122,535	\$ 84,596	Personnel Services	\$ 143,999	\$ 150,392	\$ 116,127	\$ 121,240	\$ 57,078	\$ 60,170
Licenses & Permits	\$ 340,200	\$ 371,800	Supplies	\$ 82,900	\$ 99,100	\$ 5,700	\$ 6,500	\$ 5,200	\$ 5,000
Intergovernmental	\$ 182,202	\$ 207,618	Other Services & Charges	\$ 189,300	\$ 158,375	\$ 314,125	\$ 322,280	\$ 49,964	\$ 51,619
Charges for Services	\$ 806,491	\$ 961,330	Depreciation	\$ 329,600	\$ 325,000	\$ 97,850	\$ 97,850	\$ 6,180	\$ 6,000
Fines and Forfeits	\$ 196,000	\$ 203,000	Total Operating Expenses	\$ 745,799	\$ 732,867	\$ 533,802	\$ 547,870	\$ 118,422	\$ 122,788
Miscellaneous	\$ 176,747	\$ 183,105	Operating Income (Loss)						
Sale of Assets	\$ -	\$ -		\$ 46,451	\$ 89,320	\$ 3,538	\$ 5,476	\$ 70,508	\$ 71,734
Proceeds from Bond Sales	\$ -	\$ -	Non-Operating Revenues						
Transfers from Other Funds	\$ 429,919	\$ 467,495	Water Connection Fees	\$ 13,600	\$ 17,000	\$ -	\$ -	\$ -	\$ -
Total Revenues	\$ 6,084,811	\$ 6,456,632	Interest Earnings	\$ 5,000	\$ 5,000	\$ 8,000	\$ 5,000	\$ 1,000	\$ 1,000
Expenditures			Miscellaneous	\$ -	\$ -	\$ -	\$ -	\$ 3,000	\$ 3,000
General Government	\$ 1,101,718	\$ 1,055,886	Non-Operating Expenses						
Public Safety	\$ 2,104,438	\$ 2,220,555	Interest Expense	\$ (131,076)	\$ (77,305)	\$ -	\$ -	\$ -	\$ -
Public Works	\$ 609,947	\$ 661,856	Transfers from Other Funds	\$ 369,556	\$ 358,425	\$ -	\$ -	\$ -	\$ -
Parks & Recreation	\$ 182,732	\$ 226,911	Transfers to Other Funds	\$ (113,295)	\$ (114,101)	\$ (118,949)	\$ (119,318)	\$ (50,200)	\$ (51,700)
Debt Service	\$ 896,326	\$ 1,039,729	Net Income (Loss)	\$ 190,236	\$ 278,339	\$ (107,411)	\$ (108,842)	\$ 24,308	\$ 24,034
Bond Refunding	\$ -	\$ 1,160,000	Capital Outlay	\$ -	\$ -	\$ -	\$ -	\$ 573,375	\$ 433,375
Capital Outlay	\$ 2,851,387	\$ 2,942,852	Debt Service Principal						
Transfers to Other Funds	\$ 517,031	\$ 540,801		\$ 470,000	\$ 510,000	\$ -	\$ -	\$ -	\$ -
Total Expenditures	\$ 8,263,579	\$ 9,848,589	Increase (Decrease) in Governmental Fund Balance						
Increase (Decrease) in Governmental Fund Balance	\$ (2,178,768)	\$ (3,391,957)							

Administration & Public Works

Uptown Hamel Skating/Sledding Social Saturday, February 14th, 1 - 4 p.m.

Community members are invited to attend the Uptown Hamel Skating/Sledding Social on Saturday, February 14th from 1 p.m. until 4 p.m. at Hamel Legion Park. The festivities will be centralized around the Hamel Community Building, ice skating rink, sledding hill, and fire pit. The Uptown Hamel Business Group is sponsoring the event and will be serving hot apple cider and making s'mores.

For more information visit the Uptown Hamel Business Group website at <http://www.uptownhamel.com/> or call Fortin Health and Wellness Clinic at 763-478-3978.

Medicine Disposal

Properly disposing of unused medicines is important to prevent abuse or poisoning and to protect the environment. Storing unused medicines in the home poses safety and health threats. Prescription drug abuse is a growing problem, especially among teens. Accidental poisonings from medicines are also on the rise. Medicines flushed down the drain or disposed of in the trash can contaminate bodies of water, harm wildlife and end up in drinking water supplies.

The prescription drugs that are most often abused are:

- Painkillers: Vicodin, Tylenol with codeine, OxyContin, Percocet
- Depressants: Xanax, Valium, Nembutal
- Stimulants: Adderall, Ritalin, Concerta

If you have any of the above mentioned unused prescription drugs in your home, please properly dispose of them right away.

Hennepin County offers six medicine drop-off sites, which are free to the public. Please bring your medicines in their original containers or if original containers are no longer available, place the medicine in a quart-sized plastic bag.

More information on what types of medicines are accepted, hours of operation and addresses for each location can be found at: hennepin.us/medicine or call 612-348-3777.



Hennepin County Medicine Drop-off Locations

Brooklyn Center: Hennepin County District Court—Brookdale

Brooklyn Park: Hennepin County Sheriff's Patrol Headquarters

Edina: Hennepin County Library—Southdale

Minneapolis: Hennepin County Public Safety Facility

Minnetonka: Hennepin County District Court—Ridgedale

Spring Park: Hennepin County Sheriff's Water Patrol

Winter Salt Use

As a homeowner you will likely be using salt or other de-icers on your driveway, sidewalks, and steps. Numerous products are available to remove ice. Some products are a blend of salts and some are considered more pet friendly.

RECOMMENDATIONS:

- ▶ **First, clear as much snow/ice as possible.** Use shovels, brooms, blowers, ice chisels and scrapers. Removing snow promptly reduces compaction from walking or driving on it.
- ▶ **Follow the product directions.** Note the effective operating temperatures. Use sand for traction and at lower temperatures beyond where de-icers do not work. Do not apply more than is necessary.
- ▶ **Reuse Salt.** If you see excess, sweep it up to use in the future.

As snow melts the salt and water flows into the storm drains which, in most cases, takes the water and contents untreated to the local rivers and streams.

The City of Medina always considers safety first, but is also making a very conscious effort to use less salt and sand to cut down on the environmental impact. Although the City does not have a bare pavement policy, we try to achieve one as best possible on the collector roads, but will be using salt and sand very sparingly on non-collector roads, and primarily only at intersections.



Fast Just got Faster with CenturyLink® High-Speed Internet

CenturyLink® High-Speed Internet is designed for everything and anything you want to do online.

- ▶ Connect multiple devices at the same time with wireless home networking
- ▶ Watch HD movies on Netflix®
- ▶ Skype with friends and connect on Facebook and Twitter
- ▶ Download a song in seconds
- ▶ Dominate games online in real time

CenturyLink® has invested billions in their national network and are rolling out 1 Gig in the Twin Cities. To find out more about 1 Gig go to centurylink.com/gig.

If you want to find out what speed is available in your area, please contact CenturyLink® at their Ridgedale Center store at: 952-545-1093.