



Inside this issue:

Will you Be a Friend to Medina's Parks? Pg. 1
 City Seeks Election Judges..... Pg. 1
 2040 Comprehensive Plan Pg. 2
 Land Use Applications Under Review Pg. 2
 Spring Burning Restrictions..... Pg. 2
 Business Profile: OAK Eatery..... Pg. 3
 Safe Disposal of Needles and Sharps Pg. 3
 The Myth of a Lush Green Lawn Pg. 3
 City Meeting Calendar Back
 Board of Appeal & Equalization..... Back
 Bike Rodeo—Save the Date..... Back
 City Council Email Notifications..... Back
 Spring Cleanup Day Flyer..... Insert

♻️ Paper contains 38% post-consumer unrecycled content.



The Medina Message

A bi-monthly publication from the City of Medina

Will you be a Friend to Medina's Parks?

Spring has arrived and activities at Medina's eleven parks and nature areas are in full swing. The City wants to keep these areas in top form, and to refine and enhance them with the help of community members. In that regard, Medina is seeking volunteers willing to "befriend" one or more of its parks or nature areas. As a friend of Medina's parks, individuals or groups would undertake projects designed to clean, beautify and protect the parks, such as:

- ▶ Installing, maintaining or renovating plant beds
- ▶ Installing and/or monitoring bird houses
- ▶ Creating and maintaining butterfly gardens
- ▶ Conducting spring clean-up, weed and trash removal



Above: Eagle Scout Fred Stephan became a "Friend of the Park" by building a picnic shelter at Holy Name Park.

Your suggestions for other projects are welcome! Friends of the Park projects are ideal for community and philanthropic groups, garden clubs, church groups, local businesses and school groups, as well as individuals and families. Your efforts may even be recognized with a plaque or sign in the park you've befriended, or a future story printed in the *Medina Message* or *Medina Living*. Serving as a Friend of the Park is a great way to get involved in the Medina community and to enjoy the fruits of your labors when you visit our city parks.

For more information or to participate in the Friends of the Park program visit the City's website at <http://medinamn.us/svcs/parks-recreation/> or contact Jodi Gallup at 763-473-8850 or email jodi.gallup@ci.medina.mn.us.

City Seeks Election Judges



The City is seeking election judges for the 2016 State Primary on Tuesday, August 9th and for the 2016 General Election on Tuesday, November 8th. Election judges are paid positions that supervise and help with elections at the polls.

You must be an eligible voter in Minnesota to serve as an election judge, and you must be able to read, write and speak English. Here are some general duties of an election judge: open and close the polls, register and sign in voters, be responsible for the security of all election materials, distribute and collect ballots, help voters requiring assistance, and record and certify vote totals.

If you are interested in serving as an election judge, please fill out an application and mail it back to City Hall by June 13, 2016. Election judge applications can be found on the City's website at <http://medinamn.us/citygov/elections/> or call City Hall. Questions can be directed to Election Coordinator Jodi Gallup at 763-473-8850 or email jodi.gallup@ci.medina.mn.us.

CITY HALL

2052 County Road 24
 Medina, MN 55340
 p: 763-473-4643
 f: 763-473-9359
 e: city@ci.medina.mn.us

City Hall Office Hours
 Mon-Fri 8 a.m. - 4:30 p.m.

PUBLIC SAFETY

600 Clydesdale Trail
 Medina, MN 55340
 p: 763-473-9209
 f: 763-473-8858
 e: police@ci.medina.mn.us

Police Department Office Hours
 Mon-Fri 8:30 a.m. - 5 p.m.

Mayor

Bob Mitchell 763-473-1042

City Council

Jeff Pederson 612-916-6448
 John Anderson 612-618-5702
 Kathleen Martin 612-344-1111
 Lorie Cousineau 612-251-3244

City Council Meetings

First & third Tuesday of each month at 7:00 p.m.

Planning Commission Meetings

Second Tuesday of each month at 7:00 p.m.

Park Commission Meetings

Third Wednesday of each month at 7:00 p.m.

Newsletter Editor

Jodi Gallup
 Assistant City Administrator

www.ci.medina.mn.us

City Meeting Calendar

April

- 5th Tues—City Council 7:00 pm
- 6th Wed—Board of Appeal 6:30 pm
- 12th Tues—Planning Commission 7:00 pm
- 19th Tues—City Council Work Session 6:00 pm
- 19th Tues—City Council 7:00 pm
- 20th Wed—Park Commission 7:00 pm

May

- 3rd Tues—City Council 7:00 pm
- 10th Tues—Planning Commission 7:00 pm
- 17th Tues—City Council Work Session 6:00 pm
- 17th Tues—City Council 7:00 pm
- 18th Wed—Park Commission 7:00 pm
- 30th Mon—City Offices Closed (Holiday)

All meetings at City Hall unless otherwise noted.
 Meeting agendas on website when available.

Board of Appeal and Equalization April 6, 2016 at 6:30 p.m.

This meeting is held annually for the purpose of reviewing and correcting the 2016 assessed property values or property classifications in the City of Medina. All persons considering themselves aggrieved by said assessment, or who wish to complain that the property of another is assessed too low, may appear at the meeting and show cause for having such assessment corrected.

The burden of proof is on the resident to justify a decrease in property value. The City is requesting that residents complete a City application prior to attending the meeting. The application can be found on the City's website at <http://medinamn.us/boa/>.

Bike Rodeo—June 11th—Save the Date

Save the date for Medina's annual bike rodeo for kids on Saturday, June 11th from 10:00 a.m. to 1:00 p.m. It will be held in the Target parking lot at 300 Clydesdale Trail. The event is free and is intended to have your children ages 3-12 polish up their bicycle skills. Kids will be able to ride through obstacles and bikes will also be inspected. Come for family fun, education on bicycle safety, and prizes!

City Council Agendas and Minutes Email Notifications

Stay informed on what is happening at upcoming City Council meetings. The City emails copies of Council agendas and minutes at no cost to residents. If you would like to be added to the regular email notification list, email jodi.gallup@ci.medina.mn.us to sign up.



Planning & Public Safety

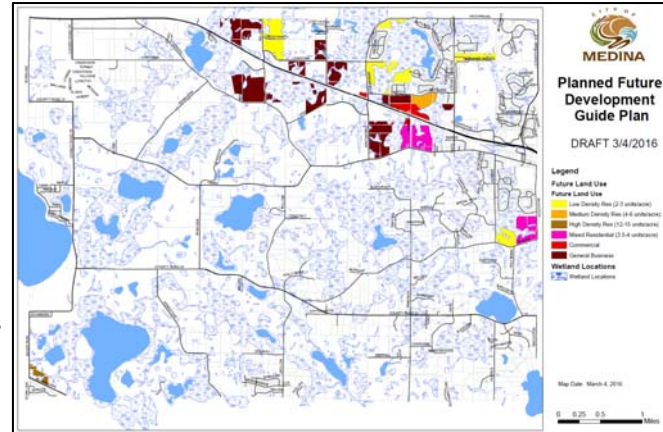
Community Meetings on Conceptual Future Growth/Development Plan May 14 and May 16—Provide Your Comments Today on mySidewalk!

The City is currently in the midst of updating its Comprehensive Plan, which guides future growth in the community and also guides economic development and investments in City services such as natural resources/parks/recreation, transportation, and water resources. The Plan establishes Medina's vision as a community and sets goals and objectives which guide decisions and policies.

The Comprehensive Plan also addresses requirements which are placed upon the City by the Metropolitan Council which include:

- Planning for a minimum of 951 new households by 2040
- Planning for a minimum of 253 higher density households (greater than eight units per acre)
- Maintaining a minimum density of three homes per acre

The Future Growth/Development Plan to the right attempts to address these regional mandates within the context of the draft Vision and Community Goals which have been formulated by the Comp Plan Steering Committee. The map displays which properties could be developed over the next two decades and which type of development could be expected. The map can be viewed larger on the city's website at: <http://medinamn.us/2040compplan/>.



Join the Conversation!

Various opportunities exist for you to take part in creating the 2040 Comprehensive Plan and to comment on the conceptual Future Growth/Development Plan.

1. Participate electronically anytime at Medina's mySidewalk page: <https://medinacompplan.mysidewalk.com/>.
2. Attend a community meeting on either Saturday, May 14 (9:30 am to noon) or Monday, May 16 (5:30 pm to 8 pm). Meetings will be held at Medina City Hall, 2052 County Road 24, Medina, MN 55340.
3. Discuss with your neighbors or members of the Steering Committee, Planning Commission or City Council.
4. Send comments or speak to City Planner Dusty Finke at dusty.finke@ci.medina.mn.us or (763) 473-8846.

Keep up-to-date on Medina's mySidewalk page and through updates in the City newsletter.

Land Use Applications Under Review

The following land projects are currently under review by the City. For more information on one of the projects, or for an update on the review schedule, please visit <http://medinamn.us/citygov/departments/planning-zoning/> or contact the Planning Department at (763) 473-4643, ext. 1.

Dellcroft PUD Concept Plan – Hamel Road and Arrowhead Drive – The applicant requests a Planned Unit Development (PUD) Concept Plan for a residential development to include 131 single-family homes and 30 townhomes west of Arrowhead Drive, north and south of Hamel Road. Twenty-two of the lots would be part of a rural Conservation Design PUD (CD-PUD) south of Hamel Road, including the permanent conservation of 51 acres. The Planning Commission is tentatively scheduled to hold a public hearing on April 12 and the City Council is tentatively scheduled to review at the April 19 meeting.

Clydesdale Marketplace Sign Amendment – NE corner of Highway 55 and Clydesdale Trail – The applicant requests an amendment to their Planned Unit Development (PUD) to allow a monument sign at the northeast corner of Hwy 55 and Clydesdale Trail. The Planning Commission is tentatively scheduled to hold a public hearing on April 12.

Spring Burning Restrictions

Each spring, the DNR restricts all permit burns. As the small amount of snow we received this year disappears, we are left with very dry conditions. Recreational fires, no larger than 3' x 3' x 3', are still allowed. Please use extreme caution to ensure the recreational fire stays under control.

If you are planning other burns, such as large amounts of brush or vegetation, permits will be available once the DNR lifts the restrictions as the environment greens up.

Please contact the Medina Police Department at (763) 473-9209 if you have any questions. In the future, if you would like to apply for a permit, you can stop by their office at 600 Clydesdale Trail.

Business & Environment

City Business Profile: OAK Eatery

OAK Eatery opened on January 21, 2016 at 190 Westfalen Trail in Medina in the new Hamel Town Center building at the corner of Highway 55 and Sioux Drive. At OAK Eatery, their focus is to provide their guests with an excellent experience by sourcing quality ingredients and serving handcrafted, house-made food. Family-owned and operated, they strive to provide a place for all ages to enjoy and are committed to the community they serve.

OAK Eatery's menu consists of a variety of cuisines, with options varying from specialty burgers, sandwiches, fresh soups, salads, pizzas and flatbreads to their famous fish tacos; they truly have something for everyone. They are open for breakfast, lunch and dinner and also offer a full list of coffee and espresso drinks, as well as a seasonal selection of wine and craft beers.

Find OAK Eatery's hours, menu and more at oakeatery.com.



Safe Disposal for Household Needles & Sharps

Needles and sharps from households are now being accepted for disposal at Hennepin County's Drop-off Facilities in Brooklyn Park and Bloomington.



Please note sharps will not be accepted if not in a rigid, puncture-resistant, plastic container with a screw-on lid. No glass containers allowed. Glass containers may break and spill the contents. Examples of acceptable containers include empty laundry detergent bottles with screw-on lids. You can also purchase a sharps disposable container from a pharmacy.

For additional information, proper preparation and directions, go to www.hennepin.us/green-disposal-guide/items/needles-sharps.

The Myth of a Lush Green Lawn

Many residents have said that they moved to Medina to enjoy its beauty and its diverse wildlife. Living in Medina, we often have the thrill of seeing deer, fox, eagles, pheasants, bluebirds and many song birds in our own backyards.

The highly promoted weed-free expansive mowed lawn is the opposite of what wildlife need. Despite constant spring advertising for lawn products, the planting of native shrubs, trees, and wildflowers make a healthier habitat for humans, colorful butterflies and birds than a lush lawn. Going native will also give you freedom from time-consuming chores, using far less energy and thus reducing your carbon footprint. Butterflies are a perfect excuse to reduce mowing area and to relax on the patio instead. Monarchs need native milkweed to survive and reproduce. Even thistles, nettles and goldenrod are important to butterflies, many of which are far less common now than they used to be. Our native pollinators, already struggling from the over use of chemicals, cannot utilize most of the ornamental plants that are sold. The insects are attracted to their bright colors, but when they visit, there is almost no nutrition waiting there for them.

Vines such as Virginia Creeper and tangles of berry vines will help the migrating birds that need to fatten up for their long trip south. It is wildlife friendly to allow the edges of your yard to grow up in dogwoods, wild plum and service berries. All wildlife needs cover from predators, places to nest whether they are birds, frogs or fox. A large mowed lawn is a dangerous place for animals to cross. If you live by a wetland or lake, mowing down to the water will readily attract geese that relish grazing on freshly mowed grass. Buffers of native shrubs and wildflowers will encourage the geese to move on and help to filter lawn run-off.

What some of us consider weeds actually provide important food for the birds that stop to feed and refuel in our garden. Neat and tidy is not necessarily good! Leaving those seed heads on the purple coneflowers into the fall will attract and nourish visiting winter finches.

On the subject of weeds, there are many lawn care companies whose mission is to fight crab grass. And yet, crab grass still persists and future applications will be required. Lawn care companies are supposed to sign lawns after application to keep children and pets off. There has been little research devoted to the long-term effects of most herbicides and pesticides on wildlife, so we should all remain cautious to use as little chemical as possible. Insects have been on the earth for millions of years and are well known to develop resistance to chemicals we humans create.

Native grasses and shrubs do better thriving in our local area and do not require all the fertilization, chemicals, mowing and watering that a golf course type lawn does. Think less weeding, less fertilizing, and less watering! Think more time to enjoy your yard and garden and the animals that share your space.

The National Wildlife Federation and Garden Club of America offer many tips on creating wildlife friendly yards: nwf.org/pdf/Reports/Gardeners_Guide.pdf. The United States Department of Agriculture also provides simple steps to create pollinator-friendly landscapes around your home: <http://www.fs.fed.us/wildflowers/pollinators/gardening.shtml>.

SPRING CLEAN-UP DAY

SATURDAY, APRIL 30, 2016
8:00 AM - 12:00 PM (Rain or Shine)

Located at 600 Clydesdale Trail at PW/Police Facility (Follow signs off Hwy 55)

Accepted Items:

- Scrap iron No charge
- Batteries (all) No charge
- Anti-freeze No charge
- Computer towers No charge
- Laptops & handhelds No charge
- Miscellaneous electronics \$5-10.00 ea
- All appliances \$5.00 ea
- Computer monitors \$10.00 ea
- TVs (small - under 26") \$10.00 ea
- TVs (large flat screen) \$15.00 ea
- TVs (large tube style) \$25.00 ea
- Mattresses/box springs \$25.00 ea
- Tires – car (w/ or w/o rim) \$ 4.00 ea
- Tires – truck (w/ or w/o rim) \$ 6.00 ea
- Tires – truck (semi-w/o rim) \$10.00 ea
- Tires – truck (semi-w/rim) \$15.00 ea
- Tires – tractor* \$25.00-\$60.00 ea
*(depending on size)
- Carpet, furniture, or building materials, etc. \$10 small load/\$30 large load*
*(Fully tied down pick-up truck)

Please keep your item types together as much as possible as there will be separate stations for each category.

MONARCH BUTTERFLIES

Pick up your free packet of milkweed seeds and plant them in your yard to help the monarch butterflies. For more information on monarchs go to: <http://medinamn.us/monarch-butterfly/>



Items Not Accepted:

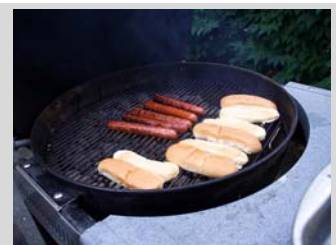
- Treated lumber
- Recyclables
- Paint
- Concrete bricks
- Commercial printers & fax machines
- Copiers
- Household/agricultural chemicals or containers
- Oil/oil products
- Household garbage
- Fluorescent lights
- Hazardous waste

To recycle any of the above items, or to recycle other times of the year, contact:

Hennepin County Drop-off Facility
8100 Jefferson Highway
Brooklyn Park, MN
612-348-3777
www.hennepin.us/dropoffs

LUNCH WILL BE SERVED - 10 A.M. UNTIL NOON

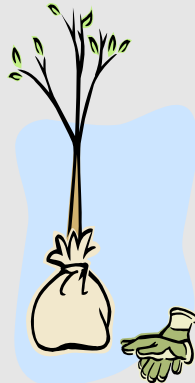
Everyone is invited to join us for a free lunch of grilled hot dogs served on Dobo's freshly made buns, along with pickles, chips & drinks. Staff would enjoy getting to know you better!



TREES FOR SALE - \$15 EACH

The City of Medina will once again be selling a limited number of the following trees at the Spring Clean-up Day.

- **Gold Maple**
- **Red Maple**
- **Sugar Maple**
- **Autumn Blaze**
- **Redmond Linden**
- **Boulevard Linden**
- **Hackberry**
- **Swamp White Oak**
- **Northern Pin Oak**



The trees are approximately 1" in diameter and 6-8' tall. The trees are bare root stock and will need to be planted immediately.

The trees sold at this year's Spring Clean-up Day will be subsidized from the City Tree Replacement Fund, which reduced the cost of each tree from \$30 to \$15.

The City is limiting the number of trees that can be purchased once again this year to six per household (two of each species - see above list) for Medina residents only.

The tree sales area will be blocked off this year and **absolutely no trees will be sold before 8 a.m.** We will have staff available to help pick out trees and answer questions.

If you are interested in purchasing more than the six tree limit, check back at 11:30 a.m. to see what trees may still remain.

Before a tree is planted, call Gopher State at 651-454-0002 to locate underground utilities.

REMINDER: Randy's Environmental Services will be sending out coupons to their organics customers that can be brought to Clean-up Day for a free bag of compost.

BRUSH AND COMPOST SITE

Located northwest of City Hall at 2052 Cty. Rd. 24, the brush and compost site is open year round Tuesday through Thursday 7 a.m. to 3:30 p.m. (except holidays) and Friday 7 a.m. to Monday 3:30 p.m. (open all weekend during daylight hours).

Accepted items for brush pile:

- Brush and woody shrubs and vines
- Christmas trees
- Large logs
- Stumps that have been cut up

Items **not** accepted:

- Painted or treated lumber
- Railroad ties

Accepted items for compost pile:

- Leaves/grass clippings (no bags please)

Items **not** accepted:

- Hay and/or straw
- Animal waste
- Garbage

BICYCLE COLLECTION

The City will once again be collecting good useable bikes for Interfaith Outreach Community Partners (IOCP).

Besides bike refurbishment and giveaways, the IOCP also offers programs such as:

- Caring for Kids
- Emergency Services
- Employment
- Food Shelf
- Housing
- Transportation
- ReSale 101 Shop (clothing/housewares)



CONTACT INFORMATION:

*Interfaith Outreach & Community Partners
1605 County Road 101 N.
Plymouth, MN 55447-2708
Phone 763-489-7500 | Fax 763-489-7510
www.iocp.org*